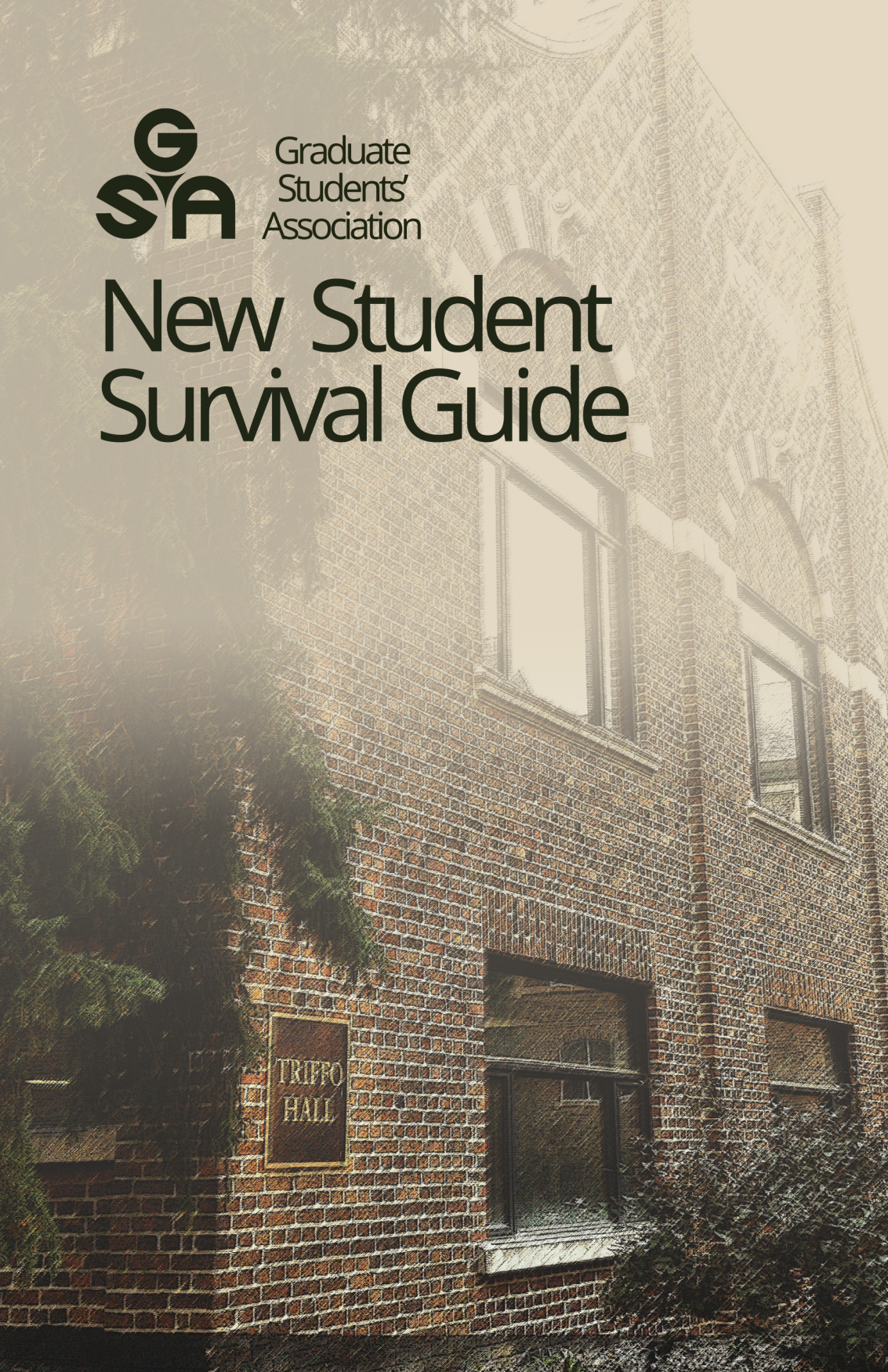




Graduate  
Students'  
Association

# New Student Survival Guide







## Welcome to the U of A!

As a member of the Graduate Students' Association (GSA), you have access to a number of services and benefits that the GSA offers:

- [GSA Health and Dental Plan](#)
- [Graduate Student Assistance Program](#)
- [GSA grants, bursaries, and awards](#)
- Advice about the GSA negotiated [Collective Agreement](#) for academically-employed graduate students
- Group rates from our recommended provider [TDIMM Home and Auto Insurance](#)
- [U-Pass](#) and [Advocacy](#) and advising.

The GSA provides the following funding opportunities for members:

- Academic Travel Grants
- Child Care Grants
- Graduate Student Group Grants
- Emergency Bursaries and
- Recognition Awards.

The GSA is operating remotely and offering:

[Virtual Front Desk](#)

[Graduate Student Orientation via e-Class](#)

## Contact Information

[gsa.frontdesk@ualberta.ca](mailto:gsa.frontdesk@ualberta.ca)

780.492.2175

The GSA office (temporarily closed) is on the first floor of Triffo Hall. Email us at [gsa.frontdesk@ualberta.ca](mailto:gsa.frontdesk@ualberta.ca) or access our website to visit our virtual front desk.

[uab.ca/gsa](http://uab.ca/gsa)



# Mental Health Resources

## Mental Health Quick Resources Guide

Do you need help or support? Use these on- and off-campus resources:

Website: [www.ualberta.ca/current-students/need-help-now](http://www.ualberta.ca/current-students/need-help-now)

## Graduate Student Assistance Program (GSAP)

Offered through Homewood Health, this program can connect GSA members to counselling and advice on a broad range of issues, including managing anxiety and depression, controlling substance use, resolving family conflict, and a variety of other psychological and wellness issues.

To access GSAP services, contact Homewood Health 24 hours a day, 7 days a week, 365 days a year:

Client Service: 780.428.7587

Website: [www.homewoodhealth.com](http://www.homewoodhealth.com)

## Counselling & Clinical Services

Counselling & Clinical Services offers free, short-term, confidential psychology services. GSA graduate students interested in counselling should call 780.492.5205.

Website: [www.ualberta.ca/current-students/counselling](http://www.ualberta.ca/current-students/counselling)

## Community Social Work Team

The Community Social Work Team is overseen by the Office of the Dean of Students, and provides support to students in connecting with each other, the campus community, and to resources on and off campus.

Website: [www.ualberta.ca/community-social-work/](http://www.ualberta.ca/community-social-work/)

## Community Helpers Program

The Community Social Work Team also organizes the Community Helpers Program which provides training in peer support for mental health and well-being to students and staff at the University of Alberta.

Website: [www.ualberta.ca/community-social-work/  
community-helpers](http://www.ualberta.ca/community-social-work/community-helpers)

# COVID-19 Resources

## Financial Support

If you are facing financial hardship due to COVID-19, you are encouraged to assess your eligibility for federal support:

Use this tool to determine the COVID-19 benefits available:  
<https://financialreliefnav.prospercanada.org/en>

The GSA has made additional supplementary funding for graduate students available through this office:

**Student Financial Support:** <https://www.ualberta.ca/registrar/scholarships-awards-financial-support/bursaries-emergency-funding/index.html?>

If you are not eligible for these supports, you may be eligible for a **GSA Emergency Bursary**: <https://www.ualberta.ca/graduate-students-association/funding/gsa-emergency-bursaries.html>

## Resources

**GSA COVID-19 Page:** <https://www.ualberta.ca/graduate-students-association/about/news/2020/covid19roundup.html>

**FGSR COVID-19 Page:** <https://www.ualberta.ca/graduate-studies/about/fgsr-covid19>

**U of A COVID-19 Page:** <https://www.ualberta.ca/covid-19/index.html>

**COVID-19 Information For Students in Residences:**  
<https://www.residence.ualberta.ca/residence-20-21>

**COVID-19 ETS Updates:** <https://www.edmonton.ca/ets/reduced-transit-service.aspx>



# COVID-19 Resources

## Resources

City of Edmonton COVID-19 Page: [https://www.edmonton.ca/programs\\_services/emergency\\_preparedness/covid-19.aspx](https://www.edmonton.ca/programs_services/emergency_preparedness/covid-19.aspx)

Government of Alberta COVID-19 Page:  
<https://www.alberta.ca/coronavirus-info-for-albertans>

Government of Canada Travel Health Notices: <https://travel.gc.ca/travelling/health-safety/travel-health-notice>

COVID-19 Online Medical Assistance Tool From Studentcare:  
<https://covid19.dialogue.co/#/chat/>

Tips for Working from Home (Courtesy of the Graduate Student Assistance Program):  
<https://www.ualberta.ca/graduate-students-association/gsa-news/2020/april/tips--working-at-home>



Graduate students elect GSA leaders each February. Here is your 2020-2021 GSA leadership team (from left to right): Vice-President Student Services, Sridhar Parasharamatham; Vice-President Academic, Sachiketha Reddy; President, Marc Waddingham; Vice-President External, Anas Fassih; and Vice-President Labour, Umesh Nimmathi

On behalf of the executive team, welcome to the University of Alberta and to our Graduate Students' Association!

The GSA advocates on behalf of all UAlberta graduate students in pursuit of a supportive, respectful, and inclusive community that promotes the multi-faceted roles played by graduate students. We provide many benefits and services to our members for the betterment of their educational experience; you can find details on these programs in this planner. We are committed to supporting our members throughout their time at the University and, should you require assistance during your tenure, we encourage you to get in touch.

Our association also comprises the union for academically-employed graduate students, working to advance and protect their rights as essential workers of the university. If you hold a Graduate Teaching Assistantship, Graduate Research Assistantship, or Graduate Research Assistant Fellowship, then you are a unionized worker who benefits from contractual and legal protections. I would encourage you to review the Collective Agreement and stay up-to-date on the bargaining process, as engaged membership is key to a successful union.

I wish you all a year of success in your academic pursuits and beyond despite these uncertain times.

With kind regards,

Marc Waddingham, GSA President 2020-2021

# GSA Contacts

## 2020-2021 Directly-Elected Officers

Marc Waddingham	President	<a href="mailto:gsa.president@ualberta.ca">gsa.president@ualberta.ca</a>
Sachiketha Reddy	Vice-President Academic	<a href="mailto:gsa.vpacademic@ualberta.ca">gsa.vpacademic@ualberta.ca</a>
Anas Fassih	Vice-President External	<a href="mailto:gsa.vpexternal@ualberta.ca">gsa.vpexternal@ualberta.ca</a>
Umesh Nimmathi	Vice-President Labour	<a href="mailto:gsa.vplabour@ualberta.ca">gsa.vplabour@ualberta.ca</a>
Sridhar Parasharamatham	Vice-President Student Services	<a href="mailto:gsa.vpstudentservices@ualberta.ca">gsa.vpstudentservices@ualberta.ca</a>

## 2020-2021 Council-Elected Officers

Pranidhi Baddam	Speaker	<a href="mailto:gsa.speaker@ualberta.ca">gsa.speaker@ualberta.ca</a>
Michael Huang	Chief Returning Officer	<a href="mailto:gsa.elections@ualberta.ca">gsa.elections@ualberta.ca</a>
Marla Palakkamanil	Senator	<a href="mailto:gsa.senator@ualberta.ca">gsa.senator@ualberta.ca</a>

## Administrative/Professional Staff

Courtney Thomas, PhD	Executive Director	<a href="mailto:gsaed@ualberta.ca">gsaed@ualberta.ca</a>
Erika Heiberg, MA	Associate Director	<a href="mailto:gsaad@ualberta.ca">gsaad@ualberta.ca</a>





# What is the GSA?

The GSA is a corporation established under the province's [Post-Secondary Learning Act \(PSLA\)](#) as the official representative body for more than 8,000 graduate students at the University of Alberta. The GSA has representatives on the Board of Governors, the General Faculties Council and all its committees, the Faculty of Graduate Studies and Research Council, the Senate, and the Alumni Council.

The GSA's graduate student leaders advocate on important issues that improve your graduate school experience. Visit the [GSA website](#) to learn more about this work and how it benefits you.

As a stand-alone entity, the GSA is governed by a [Council](#), led by an elected executive team, and run by a professional staff reporting regularly to GSA Council. The GSA has its own lawyers, auditor, chartered accountant, and professional staff, and administers over \$950,000 in grants, bursaries, and awards annually. In addition to providing many services to GSA members, the GSA is a founding member of the Campus Food Bank and also negotiates an agreement regarding academically-employed graduate students with the Board of Governors of the University of Alberta.



## Membership, Rights, and Privileges of GSA Members

All full- and part-time registered graduate students while they are registered (where applicable) at the University of Alberta after being admitted to the Faculty of Graduate Studies and Research are considered members of the GSA. As a GSA member, you can:

- ♦ Access [GSA services](#)
- ♦ Vote in all [GSA elections and referenda](#) and
- ♦ Seek [nomination to any of the GSA's representative positions](#).

## GSA General Election

Every year, the GSA holds a [general election](#) for the executive positions of:

- ♦ President
- ♦ Four Vice-Presidents *and*
- ♦ Ten Councillors-at-Large.

You can help shape the student experience and gain valuable experience by [running for elected office](#) (certain positions receive a stipend). Watch the GSA newsletter for information about the GSA's Discover Governance program, designed to help guide graduate students interested in governance.



For more information visit [uab.ca/gsa](http://uab.ca/gsa)

# What is the GSA?

## GSA Governance and GSA Council

Under the *PSLA*, responsibility for the governance of the GSA is in the hands of GSA Council. The GSA Council is comprised of:

- ♦ [Elected GSA student executives](#) (President and four Vice-Presidents)
- ♦ Council-Elected members
- ♦ One representative from each department, faculty, or extra-departmental unit at the University that offers a graduate program *and*
- ♦ Ten Councillors-at-Large.

All GSA members may attend open session meetings of GSA Council as observers. Members may be nominated for a seat on GSA Council through their departments, or as a Councillor-at-Large during the GSA General Election. For a seat on any GSA committee or University committee with GSA representation, members may seek election through the GSA Nominating Committee; opportunities are advertised regularly through the GSA newsletter.

GSA Council has delegated a number of responsibilities to the:

- ♦ GSA Board (the senior administrative authority of the GSA and the

discussion forum for the GSA executive team and Directors)

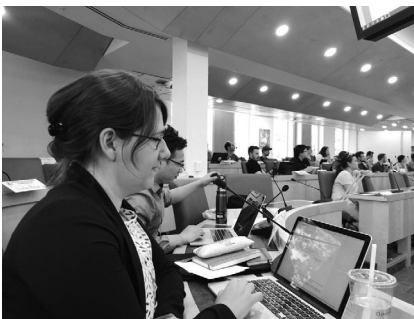
- ♦ GSA Council's standing committees (responsible for advising and recommending to GSA Council on policy and/or other specific tasks) *and*
- ♦ GSA executive team.

GSA Council meets monthly throughout the year. The meeting schedule, all materials, and minutes of past meetings can be found on the GSA website.

## GSA Committees

The work of the GSA is supported by the efforts of eight standing committees that advise GSA Council on matters and policies relevant to their mandates, and have authority to take actions set out within those mandates (*GSA Bylaw and Policy, Section F: GSA Standing Committees*).

For more information on any of these committees, or if you are interested in getting involved in a committee, please contact the Elections Coordinator at [gsa.nomcomm@ualberta.ca](mailto:gsa.nomcomm@ualberta.ca). The GSA Nominating Committee frequently communicates opportunities to serve on various committees via the GSA newsletter, and through the GSA website and other GSA social media platforms.



# Labour Advocacy

## Labour Advocacy and Advice

Under Section 58.4(1)(c) of the [Labour Relations Code](#), the GSA is “the bargaining agent for academically-employed graduate students” and is to act with “exclusive authority” in representing graduate students in negotiating the [Graduate Student Assistantship Collective Agreement \(CA\)](#). The process is outlined in [GSA Bylaw and Policy](#), Section Q: Collective Bargaining.

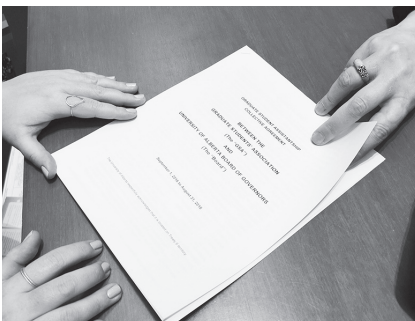
The CA is a legally binding agreement between the GSA and the University Board of Governors that contains the regulations governing graduate students who are academically-employed as Graduate Teaching Assistants (GTAs), including Principal Instructors (PIs), Graduate Research Assistants (GRAs), and graduate students with a Graduate Research Assistant Fellowships (GRAF).

*As your union, we  
champion, advance, and  
protect your rights as  
workers*

To learn about the CA, you can consult the CA provides content requirements for Letters of Appointment, outlines minimum stipend rates, describes leaves and benefits, outlines expectations for safe work environments, and stipulates a dispute resolution process for academically-employed full document on our website. The GSA also regularly communicates through emails to academically-employed graduate students.

You are encouraged to approach the GSA for assistance if you have any questions or concerns related to

employment under the CA. Contact the Vice-President Labour at [gsa.vplabour@ualberta.ca](mailto:gsa.vplabour@ualberta.ca), or Associate Director, Erika Heiberg, at [gsaad@ualberta.ca](mailto:gsaad@ualberta.ca).



For more information visit [uab.ca/gsa](http://uab.ca/gsa)



# GSA Services

## Graduate Student Assistance Program (GSAP)

All GSA members are able to access the GSAP provided by Homewood Health. Homewood Health adopts a holistic approach to program delivery, with a belief that an Assistance Program must offer more than just psychological counselling, and must also appeal to graduate students who could benefit from other important health supporting services.

In addition to face-to-face services, Homewood Health offers telephonic and web-based services and e-learning opportunities. These services are accessible 24 hours a day, 7 days a week.

Please visit their website at [www.homewoodhealth.com](http://www.homewoodhealth.com) for more information.

## GSAP Services Include:

- ♦ Individual assessment and psychological counselling for a wide range of issues
- ♦ Provision of individual, couples, and family counselling
- ♦ Individual monitoring and post-therapy follow-up as appropriate
- ♦ Referral to community resources where appropriate
- ♦ Comprehensive work life services and programs (legal, financial, fitness, nutritional, childcare, and eldercare consultations)
- ♦ Career counselling
- ♦ Access to health promotion/wellness print and electronic resources *and*
- ♦ Crisis intervention, either work-related or personal.

All GSA members are eligible to use this program through the GSAP fee assessed to all graduate students. This is a mandatory program, established by a referendum passed by graduate students and there is no opt-out option. Partners and dependants of GSA members are also able to access GSAP services.



GSA Graduate Students' Association Planner | 2020-2021





## TD Insurance Meloche Monnex Affinity Partnership for Home and Automobile Insurance

The GSA has negotiated a group rate with TD Insurance Meloche Monnex to provide GSA members with preferred automobile and home insurance.

You may contact them either by phone at 1.800.339.1847 or through their website at [www.tdinsurance.com/affinity/ualbertagsa](http://www.tdinsurance.com/affinity/ualbertagsa) to obtain a quote. Please identify yourself as a GSA member to receive a preferred-rate quote. You may be asked to provide proof of your registration as a graduate student at the U of A.



## GSA Recognition Awards

GSA Awards Night is held annually in the spring to recognize GSA members, their supporters, and graduate student groups for their achievements and contributions to the University community. Award categories range from graduate student teaching and research to community service and outreach. Funding for [GSA Recognition Awards](#) is provided by external sponsors and the Graduate Student Support Fund (GSSF), which is part of negotiated funding the GSA receives from the University to support and recognize its members.

More information and nomination forms are available on the GSA website once the competition opens and information is sent to GSA members through the GSA newsletter.



For more information visit [uab.ca/gsa](http://uab.ca/gsa)

# GSA Services

## Funding

GSA funding opportunities include:

- ♦ **Academic Travel Grants:** provided to GSA members through the GSSF to help offset the cost of participation in academic activities such as conferences and research trips that are directly related to their current academic programs.
- ♦ **Child Care Grants:** provided through the GSSF to help offset the cost of child care for GSA members.
- ♦ **Graduate Student Group Grants:** provided by the GSA to offset the cost of the academic activities of graduate student groups, such as seminars, guest lecturers, or colloquia.
- ♦ **Emergency Bursaries:** provided through the GSSF, a non-repayable bursary for GSA members who need assistance due to an unanticipated emergency.

Current policies, information, and online application forms can be found on our [website](#). Questions about GSA funding opportunities should be directed to [gsa.grants@ualberta.ca](mailto:gsa.grants@ualberta.ca).

## Campus Food Bank

Email: [foodbank@ualberta.ca](mailto:foodbank@ualberta.ca)

Website: [campusfoodbank.com](http://campusfoodbank.com)

Established by the GSA in 1991, the Campus Food Bank was the first of its kind in Canadian universities. Now a joint service, proudly sponsored by the Graduate Students' Association and the Students' Union, it is just one of an estimated 50 campus food banks across Canada.

The Campus Food Bank distributes emergency food hampers and toiletries to all members of the University community — students (graduate and undergraduate), staff (academic and non-academic), alumni, and their families. It also provides referrals to other services that may be of use to their clients. Please support the Campus Food Bank with a donation of food, toiletries, money, or time. If you are in need, please do not hesitate to use their confidential services.



GSA Graduate Students' Association Planner | 2020-2021





## Universal Transit Pass (U-Pass)

The Universal Transit Pass (U-Pass) is an initiative of the University's student associations, local transit authorities, and the University of Alberta to deliver affordable and sustainable transit service to the U of A.

### What is the U-Pass?

The U-Pass is a transit pass in the form of a sticker on the front of the ONEcard. The U-Pass program permits currently enrolled graduate students at the U of A unlimited access to regular Edmonton, St. Albert, Spruce Grove, Leduc, Fort Saskatchewan, and Strathcona County Transit systems during the Fall (September – December), Winter (January – April) and Spring/Summer (May – August) terms. The U-Pass must be displayed to bus operators upon boarding and must be on the owner's person in LRT proof of payment areas at all times.

Course-based Masters students will not be automatically assessed the Spring/Summer U-Pass. If they choose to take courses in the spring or summer they will be assessed the fee upon registration.

Thesis students must demonstrate that they are away for two or more months in a specific term to receive an exemption for the U-Pass assessment; this will require a letter from the students' supervisor confirming the time the student is out of the serviceable area.

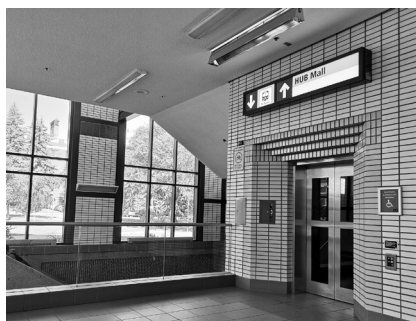
### How Does the U-Pass Program Work?

U-Pass is a transit fare program, which lowers the cost of transit for GSA members.

Each term GSA members pay a mandatory U-Pass fee, which is much lower than the cost of purchasing monthly passes for the same period because costs are spread over a large participant base.

The GSA executives continue to advocate to the city for affordable and flexible transit options for students amidst the current pandemic and will update members via the GSA newsletter. You can also watch the U-Pass website for details.

For more information about the U-Pass visit [www.ualberta.ca/current-students/upass](http://www.ualberta.ca/current-students/upass).



For more information visit [uab.ca/gsa](http://uab.ca/gsa)

## Fall U-Pass Program Update

The U-Pass Program is suspended for the Fall 2020.

### What are your options?

From September 1 - December 31, 2020

All post-secondary students, previously eligible for the U-Pass are now eligible for the Youth Fare category.

- ◆ You can purchase a Youth monthly pass for \$72.50
- ◆ You can purchase a book of 10 tickets for \$19

Depending on your income, you may be eligible for the [Ride Transit Program](#).

### Are you eligible for the low income Ride Transit Program?

All post-secondary students who meet income requirements and live within Edmonton city limits may apply through the [Leisure Access Program](#) for the Ride Transit Program.



## Ride Transit Program

- ◆ Application time is currently 2-3 weeks for processing, but may take up to 8 weeks. Students should apply early and prepare to use alternatives during the processing time
- ◆ International students are eligible
- ◆ Students under 18 can apply but need to follow the guidelines outlined on the ETS website

For all questions consult the [ETS U-Pass website](#).



For more information visit [uab.ca/gsa](http://uab.ca/gsa)

# GSA HEALTH & DENTAL PLAN\*

The Plan is a critical service of the GSA designed to fill the gaps in provincial health care.

 OVER  
**\$10,000**  
HEALTH COVERAGE

**Prescription Drugs:** Up to 80%

**Vaccinations:** 100%, up to \$150 per policy year

**Health Practitioners:** Mental health practitioners are covered at 80% per visit, up to \$600 per policy year.

Physiotherapists, chiropractors, osteopaths, naturopaths, acupuncturists, and more are covered at \$30 per visit, up to \$500 per category of practitioner per policy year. Visits to registered dietitians and massage therapists require a referral from an MD.

**Other Health Benefits:** Medical equipment, diagnostic services, dental accident, ambulance, hospitalization, and more.

 OVER  
**\$400**  
VISION COVERAGE

**Eye Exam:** \$70 per 2 policy years

**Eyeglasses & Contact Lenses:** \$200 per 24 months

**Laser Eye Surgery:** \$150 per policy year

*\*Please note that at the time of printing, the benefits for 2020-2021 were still subject to change. For complete details, visit [www.studentcare.ca](http://www.studentcare.ca) in August.*

 UP TO  
**\$650**  
DENTAL COVERAGE

**Preventive Services:** Recall exams, cleanings, and extraction of impacted teeth covered at 80%

**Basic Services:** Fillings, oral surgery, endodontics (root canals), and periodontics (gum treatments) covered at 50%

**Major Restorative:** Crowns, bridges, and posts covered at 30%

 UP TO  
**\$5,000,000**  
TRAVEL COVERAGE

**120 Days per Trip** and up to \$5,000,000 per lifetime

**Trip Cancellation:** \$1,500 per trip in the event of a medical emergency

**Trip Interruption:** \$5,000 per trip in the event of a medical emergency

**Exchange/Internship:** Students leaving on an exchange/internship can have their travel coverage extended. They should contact Studentcare before leaving.

## HOW MUCH DOES THE PLAN COST?

Please visit [www.studentcare.ca](http://www.studentcare.ca) in August for updated fees.

## SAVE MORE MONEY WITH THE STUDENTCARE NETWORKS

Complete details at [www.studentcare.ca](http://www.studentcare.ca)



## WHO'S AUTOMATICALLY COVERED?

Graduate students registered full-time (for at least 9 graduate credits) in the Fall or Winter Term

This includes:

- On-campus students
- Off-campus students
- Eligible international students
- Fort McMurray MBA program students

## CAN I ENROL MYSELF OR MY FAMILY MEMBERS?

Certain categories of students may enrol themselves. If you're covered by the Plan, you can also enrol your family (spouse and/or dependent children) for an additional fee during the Change-of-Coverage Period. Common law and same-sex couples are eligible. Visit [www.studentcare.ca](http://www.studentcare.ca) for more information.

## WHAT IF I'M ALREADY COVERED?

If you're already covered by an equivalent plan (e.g. a parent's or spouse's employee benefit plan), you can combine that plan with the GSA Plan to maximize your overall coverage and eliminate out-of-pocket costs. Alternatively, you can opt out of the GSA Health and/or Dental Plan upon submitting proof of other equivalent health and/or dental coverage. Note that provincial health care is not considered acceptable alternative coverage. Visit [www.studentcare.ca](http://www.studentcare.ca) during the Change-of-Coverage Period and follow the on-screen instructions for opting out.

## WHEN IS THE CHANGE-OF-COVERAGE PERIOD?

- **Fall Term** (enrolments and opt outs): **SEPT. 1 – 21, 2020**
- **Winter Term** (enrolments and opt outs for new students only): **JAN. 4 – 29, 2021**
- **Spring Term** (enrolments for new students only): **MAY 3 – 17, 2021**

Follow the instructions at [www.studentcare.ca](http://www.studentcare.ca).

## THE EASE OF CLAIMING AT YOUR FINGERTIPS

Discover the **Studentcare mobile** app, which lets you submit claims quickly and securely. Download it for free from the App Store or Google Play.

## IS THIS YOUR LAST SCHOOL YEAR?

Discover Continuum, an affordable health, dental, vision, and emergency travel assistance Plan designed for students who are completing their studies.

See [www.continuumplan.com](http://www.continuumplan.com) for details.



### Questions?

Care Centre  
9 am to 5 pm on weekdays  
**825-203-9645**  
[www.studentcare.ca](http://www.studentcare.ca)

# International

## University of Alberta International

University of Alberta International is committed to helping students adjust to life in Canada, and to provide a supportive environment while studying at UAlberta.

The International Student Services team — at the International Services Centre — provides services, events, and programming that help students accomplish their academic and personal goals. This team of international experts is ready to coach students towards a successful university experience.

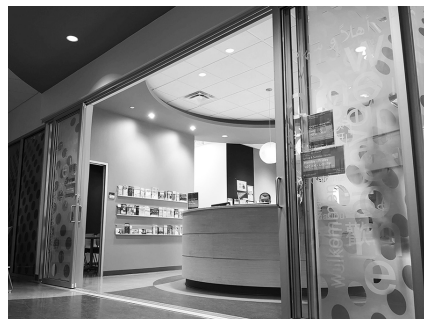
The International Services Centre is currently closed for walk-ins and has a [virtual help desk](#).

Advisors can answer questions on a variety of issues including study permits and visas, financial support, health care, and more. They also offer support and strategies for coping with homesickness, adjusting to a new culture, building a community of friends, and relating to others.

Visit the UAI website for more information:  
<https://www.ualberta.ca/international>

International Student Services programs include:

- ◆ Welcome Services – International Student Services can greet you at the airport, assist in arranging transportation into the city, and welcome you with an orientation program.
- ◆ English Conversation Club – Improve your English speaking skills. Join this informal club to engage in English conversations. The club meets every Friday afternoon.
- ◆ Peer Program – A program that matches new international students with senior, UAlberta student mentors. These mentors provide advice and information about life at the University of Alberta, and Edmonton.
- ◆ Social/Recreational Events – Offers social events and trips to explore Edmonton, and Alberta’s rich history and culture.



# U of A Services

## Dean of Students - Portfolio of Student Services

5-02 SUB | 780-492-4145 | [dosdean@ualberta.ca](mailto:dosdean@ualberta.ca) | [uab.ca/dos](http://uab.ca/dos)

### ACCESS Student Support

289 CAB | 780-492-6272 |  
[doshelp@ualberta.ca](mailto:doshelp@ualberta.ca) | [uab.ca/ACCESS](http://uab.ca/ACCESS)

### Academic Success Centre

1-80 SUB | 780-492-2682 |  
[success@ualberta.ca](mailto:success@ualberta.ca) | [uab.ca/success](http://uab.ca/success)

### Student and Residence Services Office (Augustana Campus)

Room L2-104 Learning Commons |  
780-679-1163 |  
[studentservices@augustana.ca](mailto:studentservices@augustana.ca) | [ualberta.ca/augustana/services](http://ualberta.ca/augustana/services)

### La Centrale - Pôle de Réussite et d'Excellence (Campus Saint-Jean)

Local 2-52 Pavillion McMahon |  
780-465-8797 | [lacentrale@ualberta.ca](mailto:lacentrale@ualberta.ca) |  
[lacentrale.csj.ualberta.ca](http://lacentrale.csj.ualberta.ca)

### Career Centre

2-100 SUB | 780-492-4291 |  
[yourcareercentre@ualberta.ca](mailto:yourcareercentre@ualberta.ca) | [uab.ca/cc](http://uab.ca/cc)

### Centre for Writers

1-42 Assiniboia Hall | 780-492-2639 |  
[centreforwriters@ualberta.ca](mailto:centreforwriters@ualberta.ca) | [uab.ca/C4W](http://uab.ca/C4W)

### Counselling and Clinical Services

2-600 SUB | 780-492-5205 | [uab.ca/CCS](http://uab.ca/CCS)

### First Peoples' House

2-400 SUB | 780-492-5677 |  
[fph@ualberta.ca](mailto:fph@ualberta.ca) | [uab.ca/FPH](http://uab.ca/FPH)

### Office of the Student Ombuds

2-702 SUB | 780-492-4689 |  
[ombuds@ualberta.ca](mailto:ombuds@ualberta.ca) | [uab.ca/Ombuds](http://uab.ca/Ombuds)

### Residence Services

1-044 Lister Centre | 780-492-4242 |  
East Campus Residence | 780-492-3345 |  
[housing@ualberta.ca](mailto:housing@ualberta.ca) | [uab.ca/residence](http://uab.ca/residence)

### Sexual Assault Centre

2-705 SUB | 780-492-9771 |  
[sexualassaultcentre@ualberta.ca](mailto:sexualassaultcentre@ualberta.ca) |  
[uab.ca/SACentre](http://uab.ca/SACentre)

### Student Conduct and Accountability

1-04 Triffo Hall | 780-492-0777 |  
[studentconduct@ualberta.ca](mailto:studentconduct@ualberta.ca) |  
[uab.ca/conduct](http://uab.ca/conduct)

### University Health Centre

2-200 SUB | 780-492-2612 | [hws@ualberta.ca](mailto:hws@ualberta.ca) |  
[uab.ca/UHC](http://uab.ca/UHC)

### University Health Centre Pharmacy

1-10 SUB | 780-492-2634 |  
[www.uab.ca/uhcparmacy](http://www.uab.ca/uhcparmacy)



For more information visit [uab.ca/gsa](http://uab.ca/gsa)

# Message from the Dean of Students

Welcome to your 2020/2021 academic journey. Your studies may look different this year and I commend your commitment to pursuing your academic goals at the University of Alberta.

You are critical to the campus community and to the University's mission. Diversity is our strength. Diversity of perspectives and opinions is crucial to the functioning of an academic community.

The skills you develop while on campus will forge and strengthen partnerships, create greater opportunities for you to apply your pursuits to making a difference, and lead you to experience and reflect critically.

To support your wellbeing, the Office of the Dean of Students is committed to providing all graduate students with the support and resources you need, when you need them. Get in touch with us. We look forward to hearing from you.

Dr. André Costopoulos  
Vice-Provost and Dean of Students

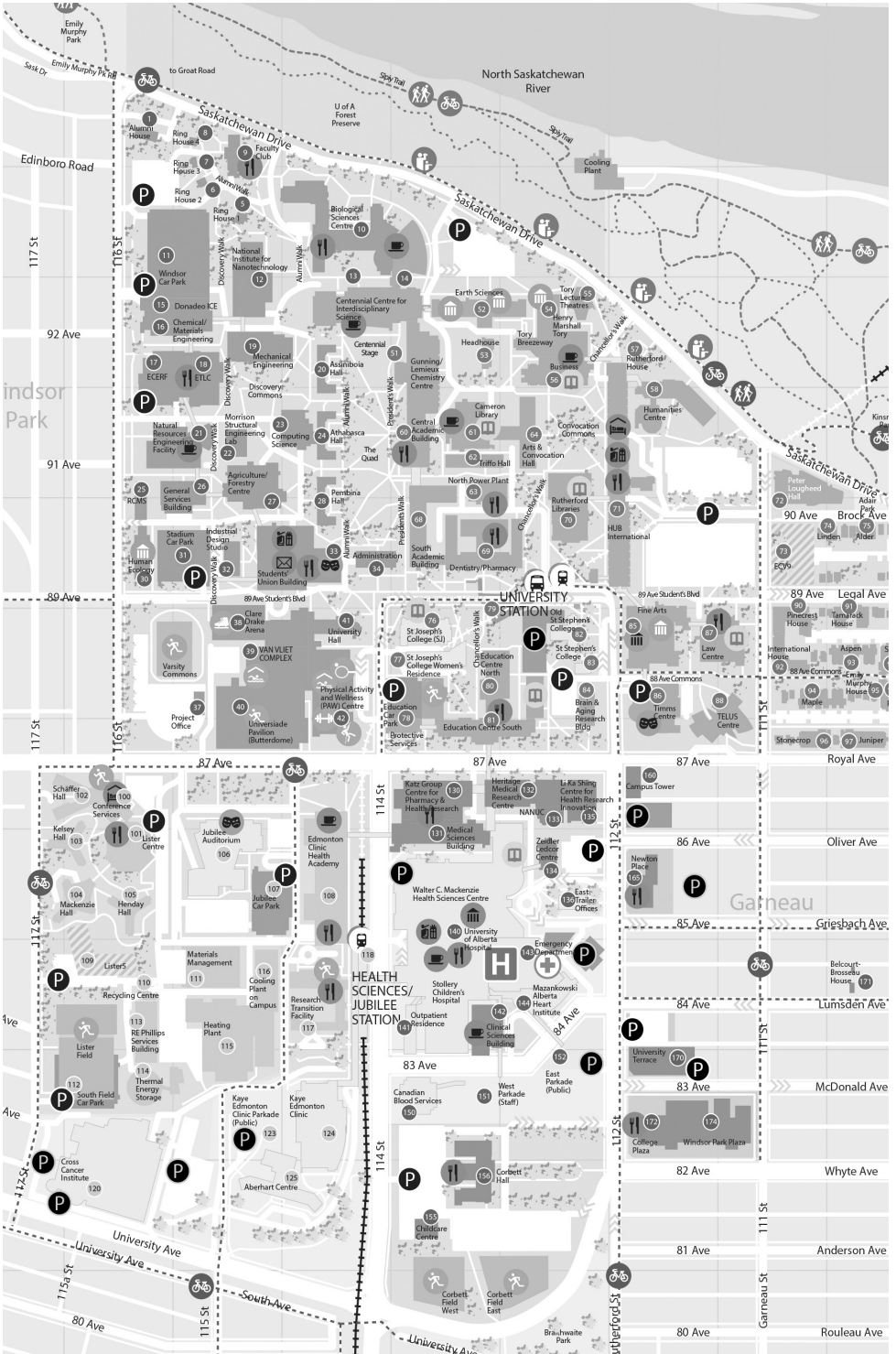


## **Office of the Dean of Students**

5-02 SUB | 780-492-4145

[dosdean@ualberta.ca](mailto:dosdean@ualberta.ca) | [uab.ca/dos](http://uab.ca/dos)

The Office of the Dean of Students supports all students in the pursuit of academic and personal success. We provide leadership on university policies and initiatives and collaborate with faculties, offices, and services across all U of A campuses to deliver effective programming that is accessible to all students.





# GSA Planners

The GSA office printed GSA planners for distribution to graduate students. Please watch the GSA website and newsletter for distribution information.

As an alternative, we have created the following template of our planner pages for your use. These are 5x5 inches by 8.5 inches, but can be printed on letter size (A4) paper.

Monday

---

---

---

---

---

---

---

---

Tuesday

---

---

---

---

---

---

---

---

Wednesday

---

---

---

---

---

---

---

Thursday

---

---

---

---

---

---

---

---

Friday

---

---

---

---

---

---

---

---

Saturday

Sunday



Sun	Mon	Tue	Wed	Thur	Fri	Sat

2020

NOTES

Sun	Mon	Tue	Wed	Thur	Fri	Sat

2021

NOTES



**JANUARY 2020**

S	M	T	W	T	F	S
			1	2	3	4
5	6	7	8	9	10	11
12	13	14	15	16	17	18
19	20	21	22	23	24	25
26	27	28	29	30	31	

**FEBRUARY 2020**

S	M	T	W	T	F	S
						1
2	3	4	5	6	7	8
9	10	12	12	13	14	15
16	17	18	19	20	21	22
23	24	25	26	27	28	29

**MARCH 2020**

S	M	T	W	T	F	S
1	2	3	4	5	6	7
8	9	10	11	12	13	14
15	16	17	18	19	20	21
22	23	24	25	26	27	28
29	30	31				

**APRIL 2020**

S	M	T	W	T	F	S
			1	2	3	4
5	6	7	8	9	10	11
12	13	14	15	16	17	18
19	20	21	22	23	24	25
26	27	28	29	30		

**MAY 2020**

S	M	T	W	T	F	S
					1	2
3	4	5	6	7	8	9
10	11	12	13	14	15	16
17	18	19	20	21	22	23
24	25	26	27	28	29	30
31						

**JUNE 2020**

S	M	T	W	T	F	S
	1	2	3	4	5	6
7	8	9	10	11	12	13
14	15	16	17	18	19	20
21	22	23	24	25	26	27
28	29	30				

**JULY 2020**

S	M	T	W	T	F	S
			1	2	3	4
5	6	7	8	9	10	11
12	13	14	15	16	17	18
19	20	21	22	23	24	25
26	27	28	29	30	31	

**AUGUST 2020**

S	M	T	W	T	F	S
						1
2	3	4	5	6	7	8
9	10	11	12	13	14	15
16	17	18	19	20	21	22
23	24	25	26	27	28	29
30	31					

**SEPTEMBER 2020**

S	M	T	W	T	F	S
		1	2	3	4	5
6	7	8	9	10	11	12
13	14	15	16	17	18	19
20	21	22	23	24	25	26
27	28	29	30			

**OCTOBER 2020**

S	M	T	W	T	F	S
			1	2	3	
4	5	6	7	8	9	10
11	12	13	14	15	16	17
18	19	20	21	22	23	24
25	26	27	28	29	30	31

**NOVEMBER 2020**

S	M	T	W	T	F	S
1	2	3	4	5	6	7
8	9	10	11	12	13	14
15	16	17	18	19	20	21
22	23	24	25	26	27	28
29	30					

**DECEMBER 2020**

S	M	T	W	T	F	S
		1	2	3	4	5
6	7	8	9	10	11	12
13	14	15	16	17	18	19
20	21	22	23	24	25	26
27	28	29	30	31		

2020

**JANUARY 2021**

S	M	T	W	T	F	S
					1	2
3	4	5	6	7	8	9
10	11	12	13	14	15	16
17	18	19	20	21	22	23
24	25	26	27	28	29	30
31						

**FEBRUARY 2021**

S	M	T	W	T	F	S
	1	2	3	4	5	6
7	8	9	10	11	12	13
14	15	16	17	18	19	20
21	22	23	24	25	26	27
28						

**MARCH 2021**

S	M	T	W	T	F	S
	1	2	3	4	5	6
7	8	9	10	11	12	13
14	15	16	17	18	19	20
21	22	23	24	25	26	27
28	29	30	31			

**APRIL 2021**

S	M	T	W	T	F	S
			1	2	3	
4	5	6	7	8	9	10
11	12	13	14	15	16	17
18	19	20	21	22	23	24
25	26	27	28	29	30	

**MAY 2021**

S	M	T	W	T	F	S
						1
2	3	4	5	6	7	8
9	10	11	12	13	14	15
16	17	18	19	20	21	22
23	24	25	26	27	28	29
30	31					

**JUNE 2021**

S	M	T	W	T	F	S
		1	2	3	4	5
6	7	8	9	10	11	12
13	14	15	16	17	18	19
20	21	22	23	24	25	26
27	28	29	30			

**JULY 2021**

S	M	T	W	T	F	S
			1	2	3	
4	5	6	7	8	9	10
11	12	13	14	15	16	17
18	19	20	21	22	23	24
25	26	27	28	29	30	31

**AUGUST 2021**

S	M	T	W	T	F	S
1	2	3	4	5	6	7
8	9	10	11	12	13	14
15	16	17	18	19	20	21
22	23	24	25	26	27	28
29	30	31				

**SEPTEMBER 2021**

S	M	T	W	T	F	S
			1	2	3	4
5	6	7	8	9	10	11
12	13	14	15	16	17	18
19	20	21	22	23	24	25
26	27	28	29	30		

**OCTOBER 2021**

S	M	T	W	T	F	S
				1	2	
3	4	5	6	7	8	9
10	11	12	13	14	15	16
17	18	19	20	21	22	23
24	25	26	27	28	29	30
31						

**NOVEMBER 2021**

S	M	T	W	T	F	S
	1	2	3	4	5	6
7	8	9	10	11	12	13
14	15	16	17	18	19	20
21	22	23	24	25	26	27
28	29	30				

**DECEMBER 2021**

S	M	T	W	T	F	S
			1	2	3	4
5	6	7	8	9	10	11
12	13	14	15	16	17	18
19	20	21	22	23	24	25
26	27	28	29	30	31	

2021

## NOTES





TRIPPO  
HALL